

Developers:
Bhavya Developers

Site: **Aatmiya New County**
Besides Haveli Resi cum Plaza,
Makarapura Air Force road, Makarpura
Vadodara

Mob.: **+91 99250 25494, 75672 96362**
Email: aatmiyagroup@gmail.com
Web.: www.aatmiyagroup.com

Architect:
Space Plus, Architecture
Vadodara

Structural Consultant:
Yagnipun Associates, Akota, Vadodara

Elevation and 3D Design:
Imagine Studio, Vadodara

Flat Payment Terms:

20% Booking Amount • 5% First Floor • 5% Second Floor • 5% Third Floor • 5% Fourth Floor • 5% Fifth Floor • 5% Sixth Floor • 5% Seventh Floor • 5% Eighth Floor • 5% Ninth Floor • 5% Tenth Floor • 5% Eleventh Floor • 5% Twelfth Floor • 5% Thirteenth Floor • 5% Fourteenth Floor • 5% Plaster Level • 5% Flooring/Finishing Level

Notes: • Actual Possession of the Unit shall be handed over to the Member within 45 days of the settling of all the accounts and dues. Sale deed, Documentation Charges, Stamp Duty Charges, Common Maintenance Charges, Service Tax Charges etc. will be extra be borne by the Buyers • Payment Schedule must be followed by strictly; any delay in payment shall incur interest penalty at the rate of 18% PA. on outstanding amount. Two Installment continuous default in payment shall lead to total cancellation of the unit. • Any increase in Govt./Local Govt. Body Taxes/Duties etc. & any new taxes/Levies will be borne by the customer • Total amount of the Extra Work must be deposited in full in advance, then only work shall be executed. • Sale deed (Dastave) to be done after settlement of all accounts. • Maintenance Deposit per unit must be deposited before 45 days of possession of the unit • In case of cancellation of any Unit, government Taxes will be deducted towards Administrative charges from the Refund Amount. • The Refund shall be paid only after the New Booking of the booked Unit. • Payments terms will be valid at each stage on start of that stage. • Actual Dimensions may vary as per the site conditions • developers/Architect reserves all the right to change/alter/raise scheme related measurement design, Drawings and price per unit etc and shall be binding to the Buyers unconditionally. • Buyer's are not allowed to do any external change in elevation of the Bungalow. • This Brochure is not a legal document, this is only for presentation of the project. • Subject to Vadodara Jurisdiction.

HONEST CRE 98243 85808





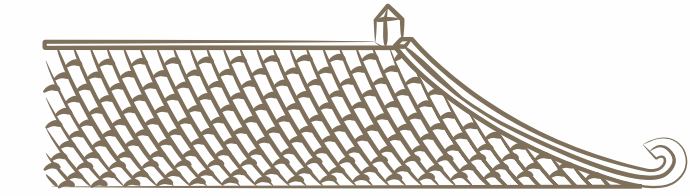
Aatmiya
New
County

FLATS | DUPLEX | SHOPS

Your Heaven your home
a reflection of your dreams

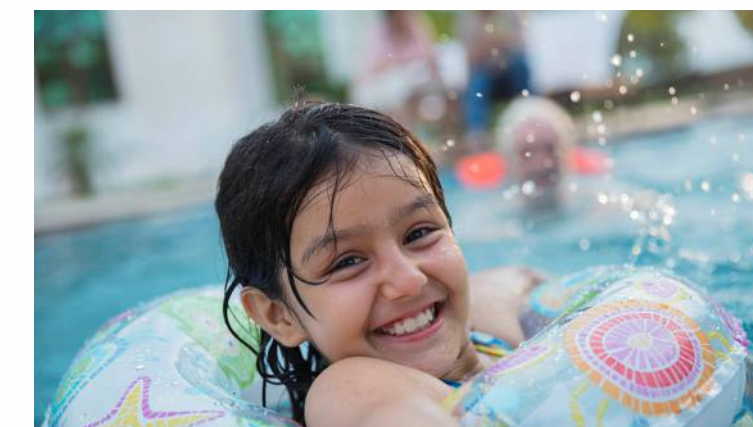
Plus, Spacious and elegantly stylish... Aatmiya New county is the answer to your evolving lifestyle needs. A stellar example of a contemporary vill style, one that remains fresh, even as the years go by.

The 3 bhk Bungalows offer residents ample space to live life to the fullest and enjoy the best moment of our lives. The community spaces offer vistas for socializing & recreation.

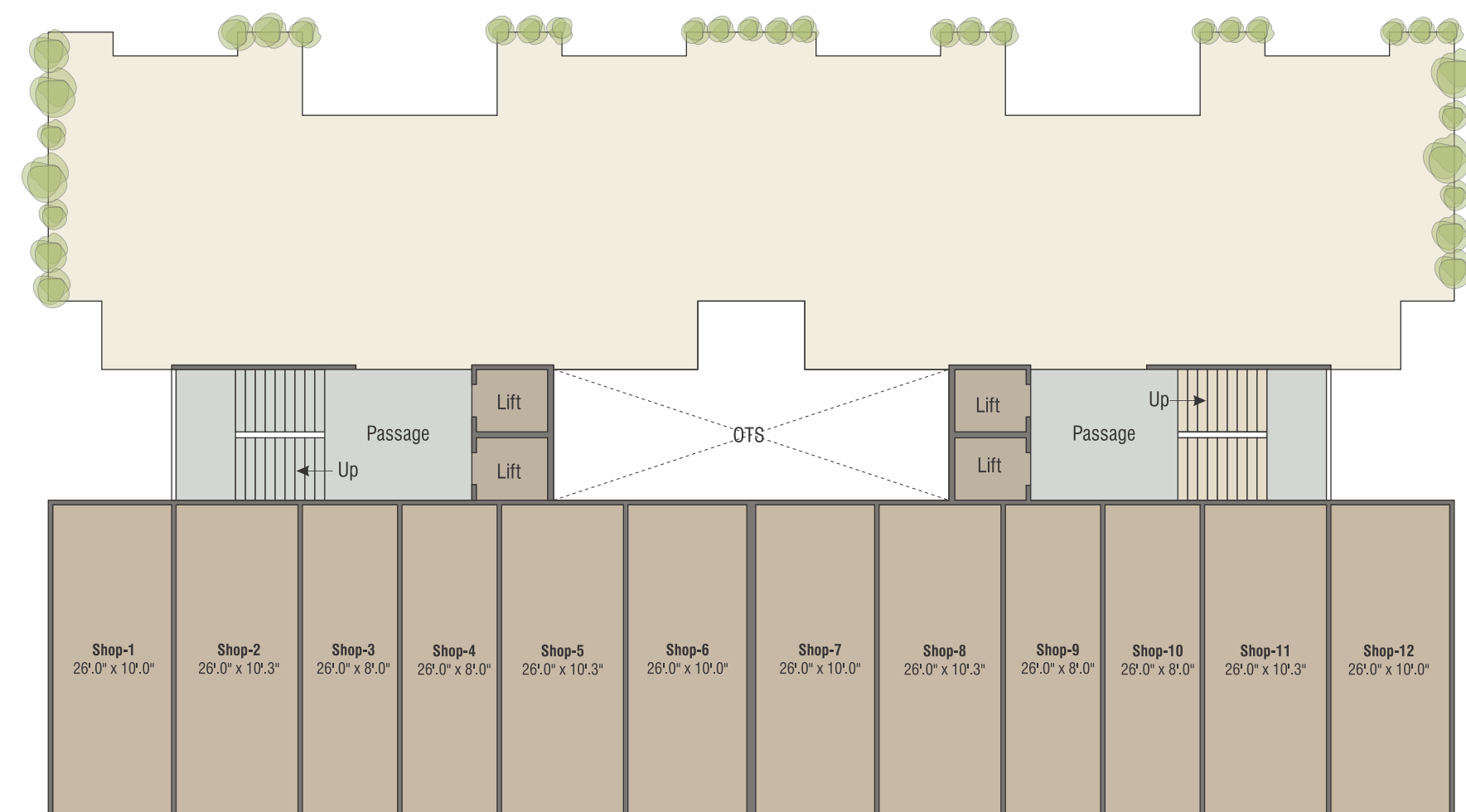


Amenities

- Swimming pool | Gym
- Land Scape Garden
- Children Playarea

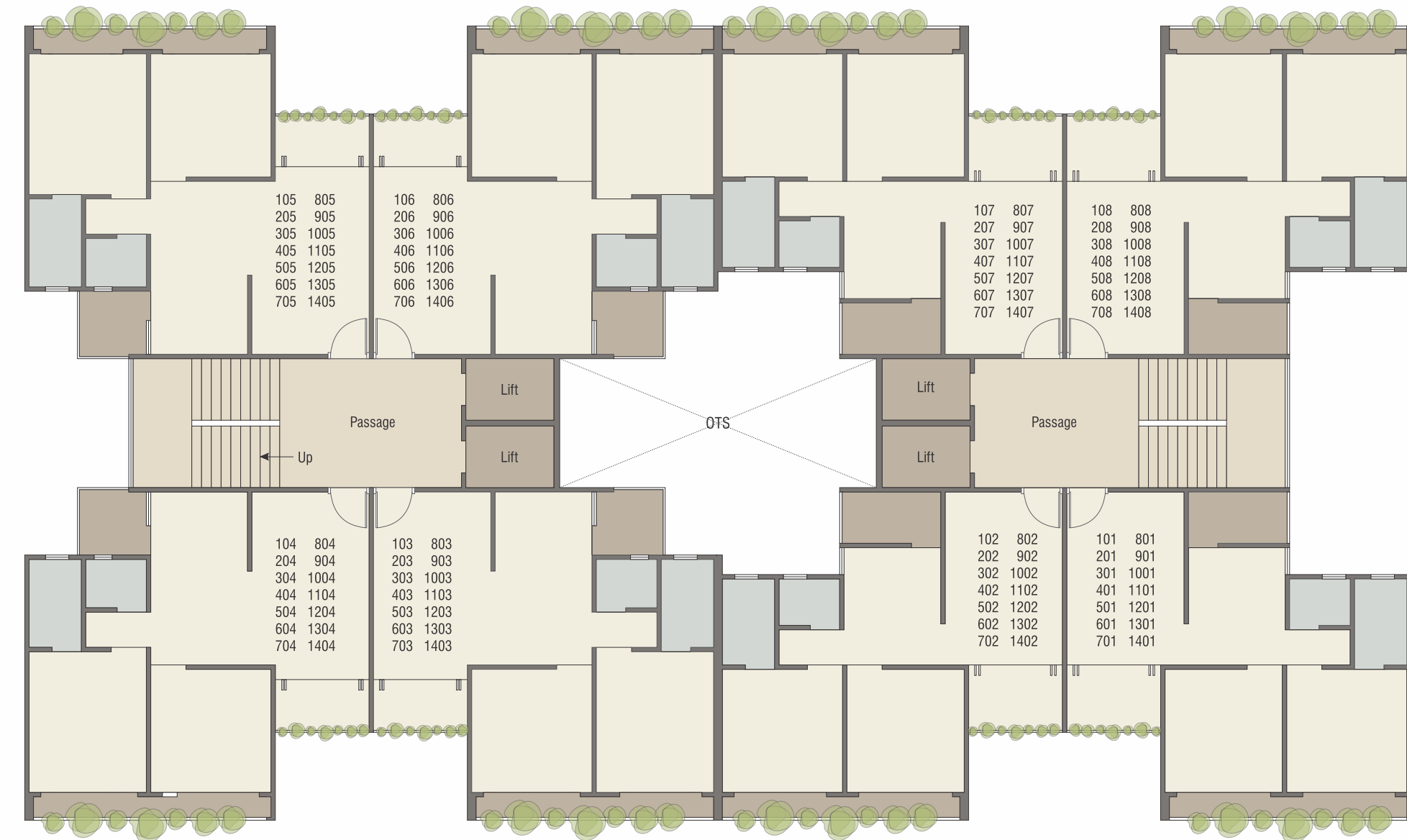


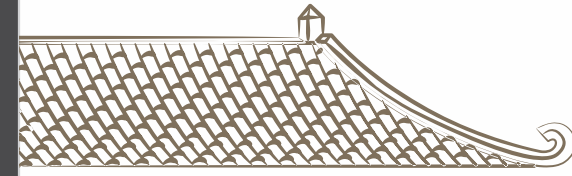
Ground Floor Shops



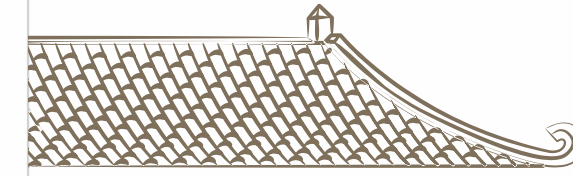
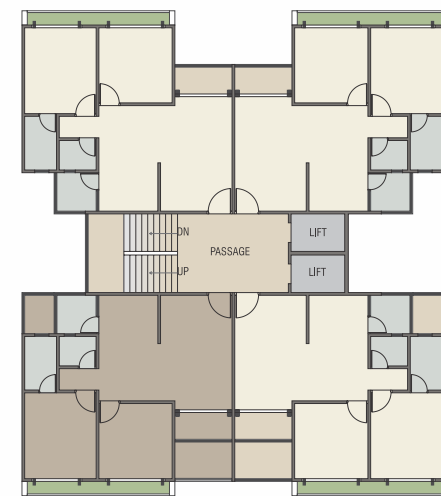
18 MTR WIDE ROAD

Typical Floor Layout

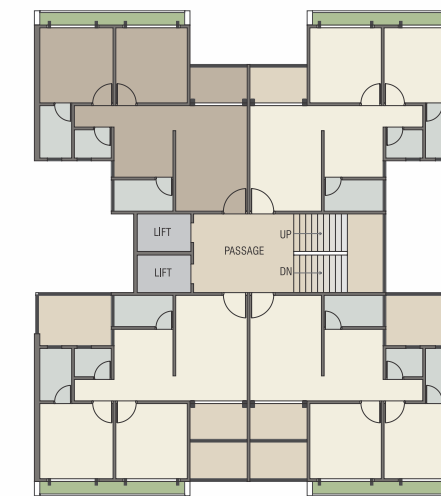


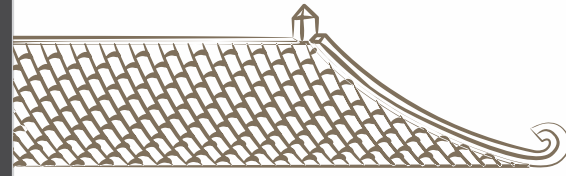


1st Floor Tower A



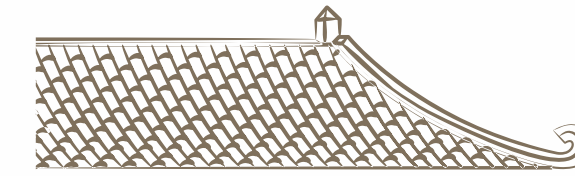
1st Floor Tower B





Typical Floor (2nd to 14th) Tower A & B





Specification



Construction:

Well designed composite structure as per Structural consultant's design



Wall Finish:

Internal wall with good quality plaster and external wall with sand face plaster.



Flooring:

Vitrified tiles flooring in all rooms



Toilets:

Design bathrooms with premium quality fittings and vessels.



Doors:

Decorative main entrance door with premium hardware fitting and all internal laminated flush door.



Windows:

Fully Glazed aluminum windows



Kitchen:

Granite Kitchen platform with S.S kitchen sink, designer wall tiles dado up to lintel level



Paint:

Emulsion paint over internal wall and Acrylic paint over external wall



Electrification:

Concealed Copper electrical wiring with premium quality Modular switches.

Provision of A.C. plug point in All Bed room and Adequate light points and plug points in all rooms.



Plumbing:

Internal plumbing will be concealed with good quality fittings



Power:

24 Hours Power Backup for Lift and common passages

Leisure Amenities

- 24 x 7 security with security cabin
- CCTV Camera
- Compound wall surrounding the community
- RCC internal roads with street lights, decorative paving & architectural plantation
- Rain water Harvesting
- Termite Resistance Treatment with piping
- Underground cabling for wire-free look
- Number plates on each unit to maintain uniformity